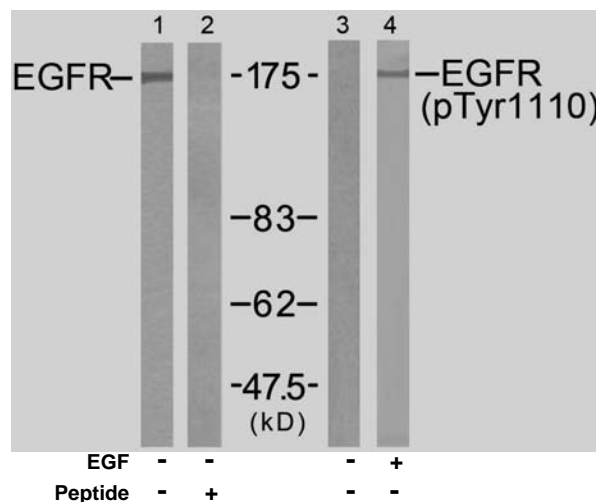


Rabbit anti EGFR (Ab-1110)

- Catalog Number:** AP21256
Amount: 100µl (for 10 Western Blotting)
Swiss-Prot No. : P00533
Form of Antibody: Rabbit IgG in phosphate buffered saline (without Mg²⁺ and Ca²⁺), pH 7.4, 150mM NaCl, 0.02% sodium azide and 50% glycerol.
Storage/Stability: Store at -20°C/1 year
Immunogen: The antiserum was produced against synthesized non-phosphopeptide derived from human EGFR around the phosphorylation site of tyrosine 1110 (P-V-Y^P-H-N).
Purification: The antibody was affinity-purified from rabbit antiserum by affinity-chromatography using epitope-specific immunogen.
Specificity/Sensitivity: EGFR (Ab-1110) antibody detects endogenous levels of total EGFR protein.
Reactivity: Human, Mouse, Rat
Applications: WB: 1:1000
References: Kaisa Erjala, et al. (2006) Clin. Cancer Res Jul 2006; 12: 4103 - 4111.
 Judit Anido, et al. (2003) Clin. Cancer Res ; 9: 1274.
 Julian Andreev, et al. (2001) J. Biol. Chem ; 276: 20130 - 20135.
 Suil Kim, et al. (2002) Am J Physiol Lung Cell Mol Physiol; 283: 67.



Western blot analysis of extracts from A431 cells untreated or treated with EGF (200ng/ml, 5min), using EGFR (Ab-1110) antibody (AP21256, Lane 1 and 2) and EGFR (phospho-Tyr1110) antibody (pAP11264, Lane 3 and 4).

For Research Use Only

Contact & Ordering Information: Angio-Proteomie, 11 Park Drive, Suite 12, Boston, MA 02215, USA. Fax: (480) 247-4337, angioproteomie@gmail.com